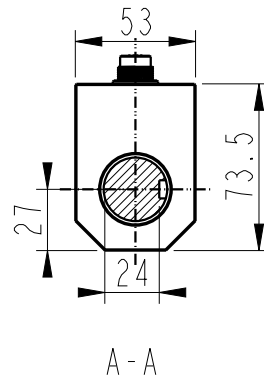
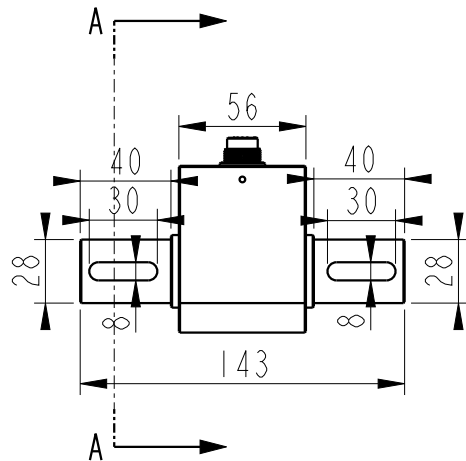
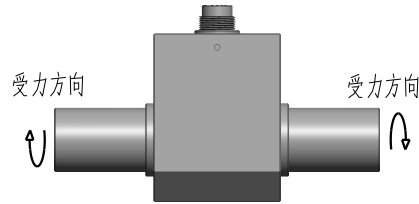
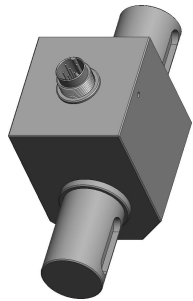


客户图



MARK	DATE	ECO NO.	DESCRIPTION	REV.	DESIGN
①			首版发行	1	Eric

产品参数

测量范围 Rated capacity	200, 300, 500 Nm
线性度 Nonlinearity	±0.3%/F.S.
蠕变 Hysteresis	±0.3%/F.S.
重复性 Nonrepeatability	±0.3%/F.S.
灵敏度 Rated output, typical	1.5mv/v
零点误差 Zero Balance	±0.05%/F.S.
工作温度范围 Temperature Range, operating	-20~60℃
补偿温度范围 Temperature Range, compensated	-10~40℃
温度对输出的影响 Temperature Effect on Output	±0.05% of rated output/10℃
温度对零点的影响 Temperature Effect on Zero	±0.05% of rated output/10℃
输入电阻 Output Imdedance	350±10Ω
输出电阻 Output Imdedance	350±5Ω
标准激励电压 Excitation Voltage, typical	5~10VDC
最大激励电压 Excitation Voltage, maximum	12VDC
绝缘电阻 Insulation Resistance	≥5000MΩ/100VDC
安全过载 Maximum Load, safe	120% of rated output
破坏性过载 Maximum Load, ultimate	150% of rated output
防护等级 Protection class	IP65
材料 construction	Stainless steelor Alloy steel
接线定义 Wiring way	Exc+: Red Exc-: Black Sig+: Green Sig-: White

- 微型结构设计 Small size type
- 信号稳定可靠 high stable rotary
- 轴对称安装方式(扳手规格可选) shaft to shaft rotary
- 最高转速4000RPM max speed

BEDELL

苏州比得电子技术有限公司
suzhou Bedell Electric Technology Ltd

未标注尺寸公差 (±)				
尺寸	A	B	C	D
X≤4	0.05	0.1	0.2	0.3
4<X≤16	0.1	0.2	0.3	0.4
16<X≤63	0.2	0.3	0.4	0.7
63<X≤250	0.3	0.4	0.5	1.2
X>250	0.4	0.5	0.8	2.0

DESIGN	Eric	DATE	23/07/17	TITLE	Model_T50B			
VERIFIED				PART NO.				
APPROVED								
					UNITS	SCALE	PAGE	REV
					mm	1:1	1/1	1