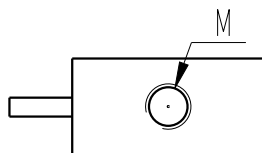
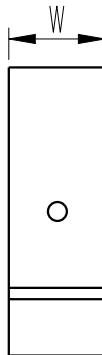
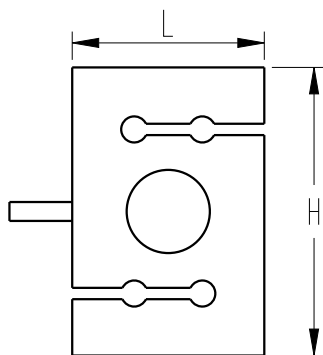
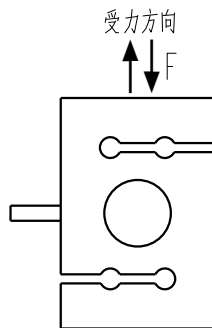
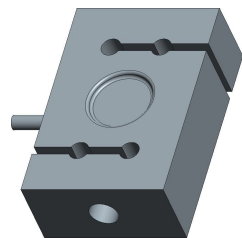


客户图



Capacity	Size(mm)	L(mm)	H(mm)	W(mm)	M
50kg		50.8	63.5	25.4	M8
100kg, 200kg, 500kg, 1t		50.8	76.2	25.4	M12
2t, 3t		76.2	108	38.1	M18*1.5
5t		76.2	108	38.1	M24*2
10t		127	178	51	M24*2

MARK	DATE	ECO NO.	DESCRIPTION	REV.	DESIGN
①			首版发行	1	Eric

产品参数

测量范围 Rated capacity	500, 1k, 2k, 5k, 10k, 20k, 50k, 100k
线性度 Nonlinearity	0.05% Of rated output
蠕变 Hysteresis	0.05% of rated output
重复性 Nonrepeatability	0.05% of rated output
灵敏度 Rated output, typical	2.0 mv/v
灵敏度误差 Sensitivity tolerance	-10%~+10%
工作温度范围 Temperature Range, operating	-10~50°C
额定温度范围 Temperature Range, Nominal	-10~40°C
温度对输出的影响 Temperature Effect on Output	0.05% of rated output/10°C
温度对零点的影响 Temperature Effect on Zero	0.05% of rated output/10°C
输入电阻 Output Impedance	350±30Ω
输出电阻 Output Impedance	350±3Ω
标准激励电压 Excitation Voltage, typical	5VDC
最大激励电压 Excitation Voltage, maximum	15VDC
绝缘电阻 Insulation Resistance	≥5000MΩ/100VDC
安全过载 Maximum Load, safe	120% of rated output
破坏性过载 Maximum Load, ultimate	150% of rated output
防护等级 Protection class	IP68
材料 construction	Stainless steel
接线定义 Wiring way	Exc+: Red Exc-: Black Sig+: Green Sig-: White

- 微型尺寸设计 Small size type
- 优质合金钢材料 Alloy steel
- 拉压型 Tension&Compression
- 防护等级 IP68 protection
- 定制化服务 Customizable size

未标注尺寸公差 (±)				
尺寸	A	B	C	D
X≤4	0.05	0.1	0.2	0.3
4<X≤16	0.1	0.2	0.3	0.4
16<X≤63	0.2	0.3	0.4	0.7
63<X≤250	0.3	0.4	0.5	1.2
X>250	0.4	0.5	0.8	2.0

BEDELL

苏州比得电子技术有限公司
suzhou Bedell Electric Technology Ltd

DESIGN	Eric	DATE	23/09/21	TITLE	Model 301C			
VERIFIED		APPROVED		PART NO.	UNITS	SCALE	PAGE	REV
					mm	1:1	1/1	1