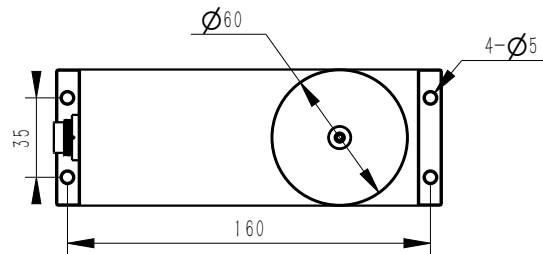
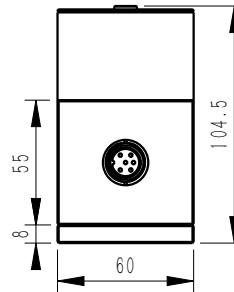
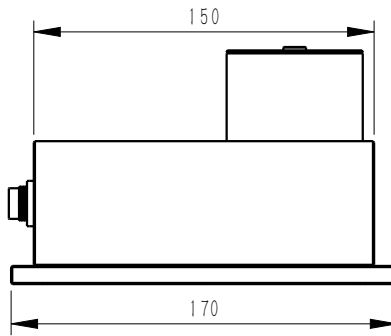
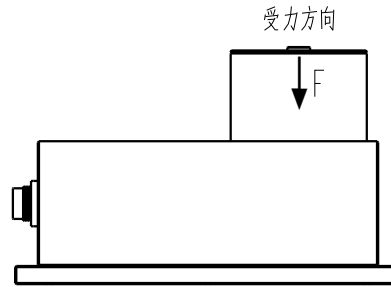
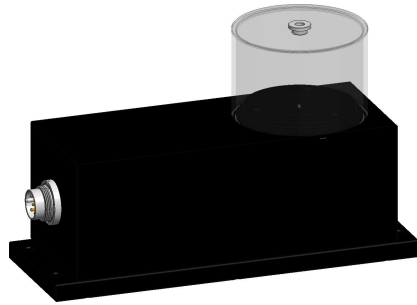


MARK	DATE	ECO NO.	DESCRIPTION	REV.	DESIGN
①			首版发行	1	Eric



Strain Force sensor	Type	BDM1								
Measuring range Fz, max. 额定范围	g	10	20	30	50	100	200	300	500	1000
Maximum range 最大加载	g	2000		2500		5000				
Maximum preload 最大预载 ¹⁾	g	5		30		200				
Typical readability 典型分度值	mg	0.1		1		10				
Linearity deviation 线性偏差 \leq	mg	1		5		30				
Repeatability 重复性 \leq	mg	0.3		3		30				
Eccentric load deviation (test) 偏载 \leq	mg	1/5g		1/10g		2/20g				
Sensitivity temperature drift 温度漂移 \leq	mg/°C	1		3		5				
Settling time 稳定测量时间 \leq	s	3								
Temperature range operating 工作温度范围	°C	5~40								
Compensated temperature range 温度补偿范围	°C	15~30								
Storage temperature range 存储温度范围	°C	-20~70								
Relative air humidity range 空气湿度范围	%	20~80								
Warm-up time after power-on 预热时间	min	10~30								
Protection class 防护等级		IP67								
Power supply 激励电压 ²⁾	Vdc	10~29								
Weight 重量	g	800								
¹⁾ : 可以在测量台面上增加安装附件的最大重量						²⁾ : 当选择数字通讯板外置时, 其激励电压范围 3-12V				

- 测量范围0-10g或0-1000G
- 高精度应变原理
- 安装简单灵活
- 优质铝合金材料外壳, 外形美观
- RS485/232通讯
- 2点标定, 多点标定可选

BEDELL 苏州比得电子技术有限公司
suzhou Bedell Electric Technology Ltd

未标注尺寸公差 (±)		DATE	TITLE	Model_BDM1A					
尺寸	A B C D	DESIGN	Eric	23/08/16	PART NO.				
X≤4	0.05 0.1 0.2 0.3	VERIFIED				UNITS	SCALE	PAGE	REV
4<X≤16	0.1 0.2 0.3 0.4	APPROVED				mm	1:1	1/1	1
16<X≤63	0.2 0.3 0.4 0.7								
63<X≤250	0.3 0.4 0.5 1.2								
X>250	0.4 0.5 0.8 2.0								