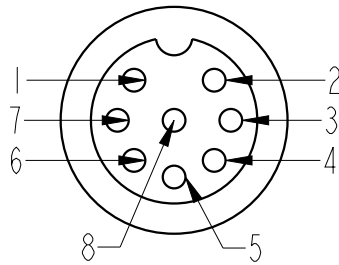
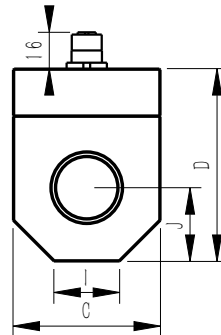
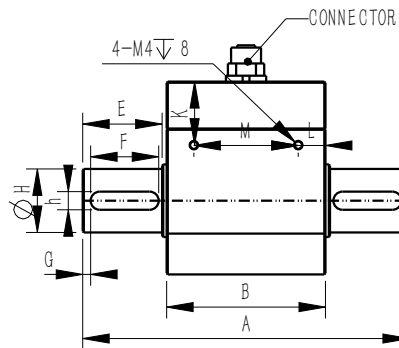
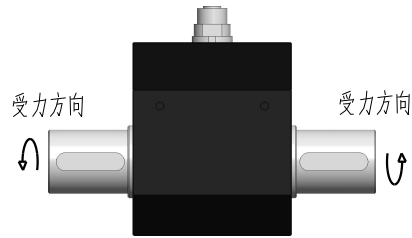
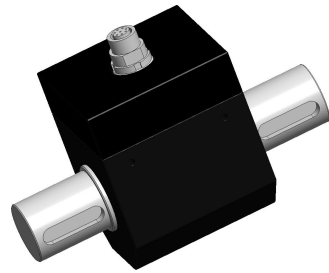


MARK	DATE	ECO NO.	DESCRIPTION	REV.	DESIGN
①			首版发行	1	Eric



8芯接头

技术指标 Technical Data

Strain Force sensor	Type	T51A/T51AS1)*
测量范围 Measuring range Fz,max	Nm	10, 20, 50, 100, 200, 500
灵敏度 Amplifier output	X	±10V, 4-20mA, RS485
线性度 Nonlinearity	%/FS	≤0.3
蠕变 Hysteresis	%/FS	≤0.3
重复性 Repeatability	%/FS	≤0.3
零点误差 Zero balance	%/FS	≤10
工作温度范围 Temperature range operating	°C	-20~60
补偿温度范围 Temperature range compensated	°C	-10~40
标准激励电压 Excitation voltage typical	Vdc	±15VDC (频率信号输出) 24VDC (电压/电流信号输出)
转速传感器 Speed sensor		标准产品不带测转速, 转速固定60脉冲/转信号
安全过载范围 Safe load max	%	150

1)*T51AS为内置转速测量, 转速固定60脉冲/转信号

- 高精度应变原理
- 低惯量设计
- 外形美观, 安装简单灵活
- 最高转速 15000RPM

功能	颜色	Pin	描述
供电	V+	红	5 电源Vin+
	V-	黑	6 电源Vin-
信号	S+	绿	3 扭矩力信号+
	S-	白	1 扭矩力信号-
	SP+	黄	4 转速信号+
	SP-	N	2 *可与S-短接
通讯	485/CAN		
	A/H+	棕	7 通讯信号+
	B/L-	灰	8 通讯信号-

量程 (Nm)	A	B	C	D	E	F	G	H	h	I	J	K	L	M
10, 20, 50, 100	133	70	55	75	30	24	3	18	6	23	27.5	27	15	40
200, 500	144	70	65	85	35	30	3.5	28	8	29	32.5	28	12	46

未标注尺寸公差 (±)				
尺寸	A	B	C	D
X≤4	0.05	0.1	0.2	0.3
4<X≤16	0.1	0.2	0.3	0.4
16<X≤63	0.2	0.3	0.4	0.7
63<X≤250	0.3	0.4	0.5	1.2
X>250	0.4	0.5	0.8	2.0

BEDELL

苏州比得电子技术有限公司
suzhou Bedell Electric Technology Ltd

DATE	TITLE	Model_T51A			
DESIGN	Eric	23/07/19	PART NO.		
VERIFIED			UNITS	SCALE	PAGE
APPROVED			mm	1:1	1/1
			REV		
			1		