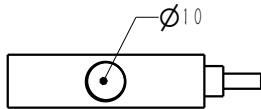
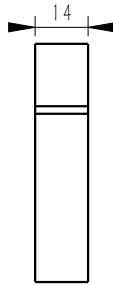
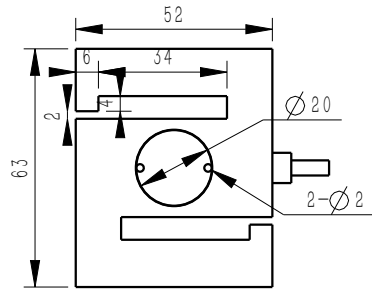
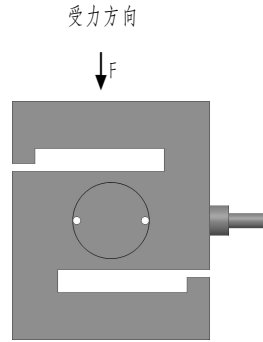
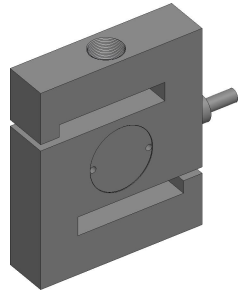


客户图



MARK	DATE	ECO NO.	DESCRIPTION	REV.	DESIGN
①			首版发行	1	Eric

产品参数

测量范围 Rated capacity	50~1250kg
非线性 Non-linearity	±0.1%FS
滞后 Hysteresis	±0.1%FS
重复性 repeatability	±0.1%FS
灵敏度 Rated output, typical	2.0(1.0)±0.2 mv/v
零点误差 Zero Balance	±2%FS
工作温度范围 Temperature Range, operating	-20~60℃
补偿温度范围 Temperature Range, compensated	-10~40℃
温度对输出的影响 Temperature Effect on Output	±0.05% of rated output/10℃
温度对零点的影响 Temperature Effect on Zero	±0.05% of rated output/10℃
输入电阻 Output Impedance	350±10Ω
输出电阻 Output Impedance	350±5Ω
标准激励电压 Excitation Voltage, typical	5~10VDC
最大激励电压 Excitation Voltage, maximum	15VDC
绝缘电阻 Insulation Resistance	≥5000MΩ/50VDC
安全过载 Maximum Load, safe	120% of rated output
破坏性过载 Maximum Load, ultimate	150% of rated output
防护等级 Protection class	IP65
材料 construction	Aluminum alloy
接线定义 Wiring way	Exc+: Red Exc-: Black Sig+: Green Sig-: White

- 优质铝合金材料
- 高精度，S型结构，拉压双向承载
- 防护等级 IP65
- 广泛应用于推拉计，料斗称及工业测力系统

**BEDELL**

苏州比得电子科技有限公司  
suzhou Bedell Electric Technology Ltd

未标注尺寸公差 (±)				
尺寸	A	B	C	D
X≤4	0.05	0.1	0.2	0.3
4<X≤16	0.1	0.2	0.3	0.4
16<X≤63	0.2	0.3	0.4	0.7
63<X≤250	0.3	0.4	0.5	1.2
X>250	0.4	0.5	0.8	2.0

DESIGN	Eric	DATE	23/08/20	TITLE	Model_103F			
VERIFIED				PART NO.				
APPROVED								
					UNITS	SCALE	PAGE	REV
					mm	1:1	1/1	1