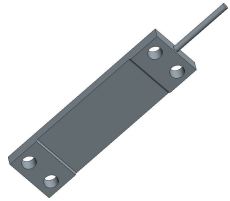
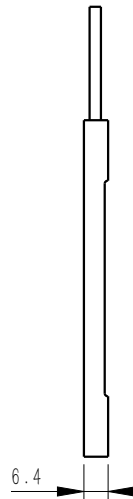
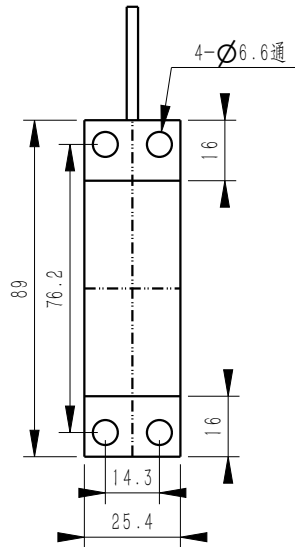
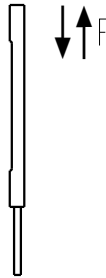


客户图



受力方向



MARK	DATE	ECO NO.	DESCRIPTION	REV.	DESIGN
①			首版发行	1	Eric

产品参数

测量范围 Rated capacity	800Kg
线性度 Nonlinearity	±0.5%F.S.
滞后 Hysteresis	±0.5%F.S.
重复性 Nonrepeatability	±0.5%F.S.
灵敏度 Rated output, typical	0.8~1.5mV/V
零点误差 Zero Balance	±0.1mV/V
工作温度范围 Temperature Range, operating	-20~60℃
额定温度范围 Nominal temperature range	-10~40℃
温度对输出的影响 Temperature Effect on Output	±0.5%F.S./10℃
温度对零点的影响 Temperature Effect on Zero	±1%F.S./10℃
输入电阻 Output Impedance	350±20Ω
输出电阻 Output Impedance	350±5Ω
标准激励电压 Excitation Voltage, typical	2.5~5VDC
最大激励电压 Excitation Voltage, maximum	10VDC
绝缘电阻 Insulation Resistance	≥5000MΩ/50VDC
安全过载 Maximum Load, safe	120% of rated output
破坏性过载 Maximum Load, ultimate	150% of rated output
防护等级 Protection class	IP65
材料 construction	Stainless steel
接线定义 Wiring way	Exc+: Red Exc-: Black Sig+: Green Sig-: White

- 优质不锈钢材料 Stainless steel
- 拉压型 Tension&compression
- 高密封性能 IP65 High protection class

**BEDELL**

苏州比得电子技术有限公司  
suzhou Bedell Electric Technology Ltd

未标注尺寸公差 (±)					DESIGN	Eric	DATE	23/08/01	TITLE	Model 107A										
尺寸	A	B	C	D						VERIFIED	APPROVED	PART NO.	UNITS	SCALE	PAGE	REV				
X≤4	0.05	0.1	0.2	0.3													mm	1:1	1/1	1
4<X≤16	0.1	0.2	0.3	0.4																
16<X≤63	0.2	0.3	0.4	0.7																
63<X≤250	0.3	0.4	0.5	1.2																
X>250	0.4	0.5	0.8	2.0																